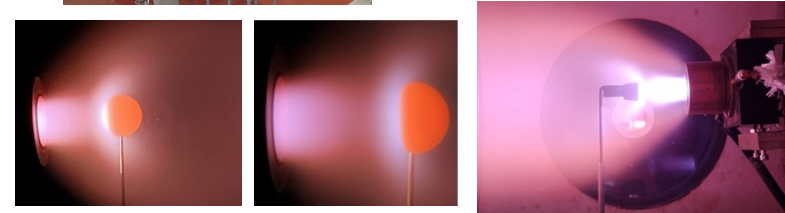
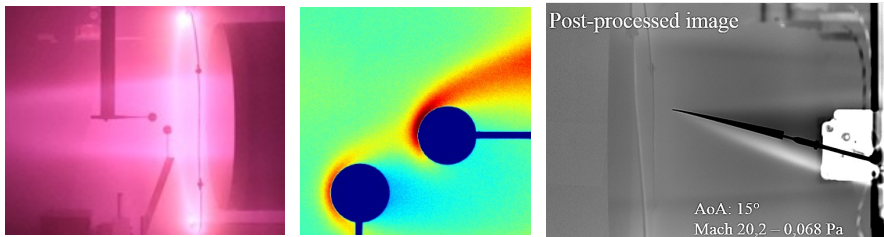
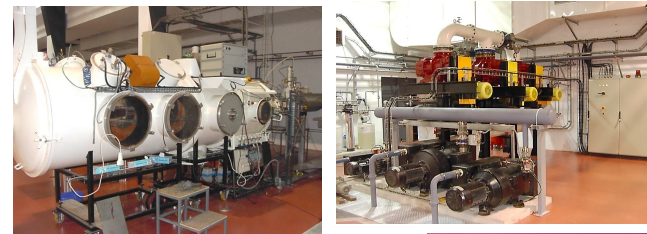


ICARE employs three test facilities to investigate high-altitude atmospheric re-entry characteristics for applications such as space debris re-entry, hypersonic glider flight, electromagnetic actuator-based flow control, and exploration of enhanced propulsion systems utilizing double-curved nozzles.

MARHy: Mach Adaptable Raréfiée Hypersonique



PHEDRA: Plasma Hors d'Equilibre Raréfiée



EDITH: l'Etude Des Interactions et Tranferts en Hypersonique

